



Edison Power Bill



SMITH, JOHN / Page 4 of 10

Service account V-VVV-VVVV-VV
Service address XXXXX
 PALM SPRINGS, CA 92260
Rotating outage Group A029

DELIVERY
 SOUTHERN CALIFORNIA EDISON
 delivers your electricity

Your cost varies by time of day

⌚ **Winter cost periods (Oct 01-May 31)**

	Weekdays	Weekends & Holidays
Mid peak	4pm - 9pm	4pm - 9pm
Off peak	12am - 8am	12am - 8am
	9pm - 12am	9pm - 12am
Super off peak	8am - 4pm	8am - 4pm

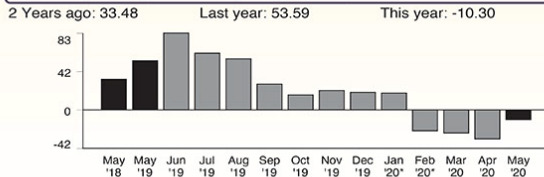
Your past and current electricity usage

	Electricity (kWh)
Winter Season - Consumption	
Mid peak	460
Off peak	346
Super off peak	20
Winter Season - Net Generation	
Mid peak	-41
Off peak	-46
Super off peak	-1,079
Total electricity usage this month in kWh	-340

Your next billing cycle for meter XXXXX-XXXXXX will end on or about 06/25/20.

Consumption is the total amount of electricity imported from SCE.
Net generation is the amount of excess electricity exported to the grid by your generating system.
Total electricity usage is your system's total net generation minus your total consumption.

Your daily average electricity usage (kWh)



Details of your non-tracked charges

Your rate: TOUD-4-9PM (SCE)
 Billing period: 04/24/20 to 05/27/20 (33 days)

Delivery charges - Cost to deliver your electricity
 Basic charge 33 days x \$0.02400
 Bal of minimum charge

Nonbypassable charges (NBCs)
 CTC, NDC, PPPC 812 kWh x \$0.01350
 DWR Bond Charge 812 kWh x \$0.00580

Other charges or credits
 Generation Municipal Surcharge

(Continued on next page)

\$0.79
 \$0.39

Your Delivery charges include:
 • \$1.18 distribution charges

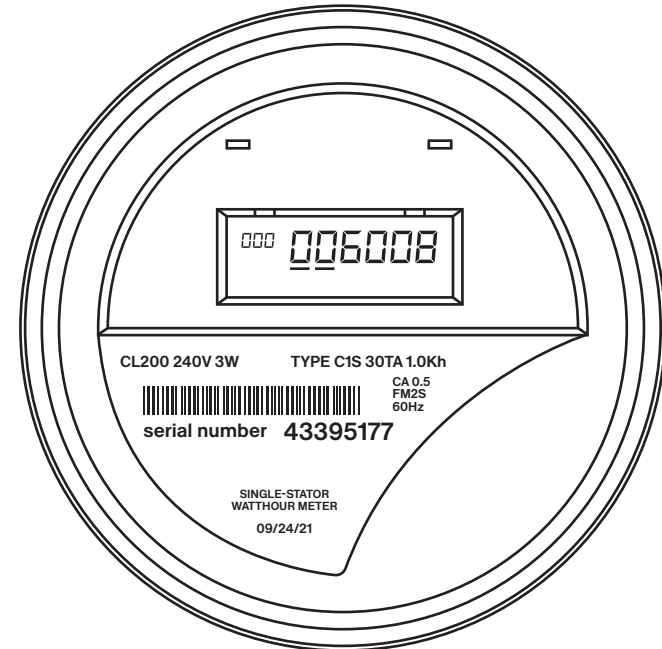
\$10.96
 \$4.71

Your overall energy charges include:
 • \$0.15 franchise fees

\$0.05

Additional information:
 • Service voltage: 240 volts
 • Generation Municipal Surcharge (GMS) factor: 0.009144
 • 2019 Vintage CRS

Net Power Meter



Weekdays

35¢	51¢	38¢
25¢	41¢	28¢

Above
Baseline

After Baseline
Credit



