



## Edison Power Bill



SMITH, JOHN / Page 4 of 10

**Service account** V-VVV-VVVV-VV  
**Service address** XXXXX  
 PALM SPRINGS, CA 92260  
**Rotating outage** Group A029

**DELIVERY**  
 SOUTHERN CALIFORNIA EDISON  
 delivers your electricity

### Your cost varies by time of day

⌚ **Winter cost periods (Oct 01-May 31)**

	Weekdays	Weekends & Holidays
Mid peak	4pm - 9pm	4pm - 9pm
Off peak	12am - 8am	12am - 8am
	9pm - 12am	9pm - 12am
Super off peak	8am - 4pm	8am - 4pm

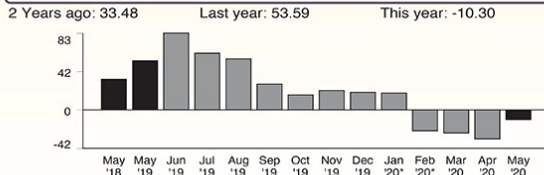
### Your past and current electricity usage

	Electricity (kWh)
Winter Season - Consumption	
Mid peak	460
Off peak	346
Super off peak	20
Winter Season - Net Generation	
Mid peak	-41
Off peak	-46
Super off peak	-1,079
<b>Total electricity usage this month in kWh</b>	<b>-340</b>

Your next billing cycle for meter XXXXX-XXXXXX will end on or about 06/25/20.

**Consumption** is the total amount of electricity imported from SCE.  
**Net generation** is the amount of excess electricity exported to the grid by your generating system.  
**Total electricity usage** is your system's total net generation minus your total consumption.

### Your daily average electricity usage (kWh)



### Details of your non-tracked charges

Your rate: TOUD-4-9PM (SCE)  
 Billing period: 04/24/20 to 05/27/20 (33 days)

**Delivery charges - Cost to deliver your electricity**  
 Basic charge 33 days x \$0.02400  
 Bal of minimum charge

**Nonbypassable charges (NBCs)**  
 CTC, NDC, PPPC 812 kWh x \$0.01350  
 DWR Bond Charge 812 kWh x \$0.00580

**Other charges or credits**  
 Generation Municipal Surcharge

(Continued on next page)

\$0.79  
 \$0.39

**Your Delivery charges include:**  
 • \$1.18 distribution charges

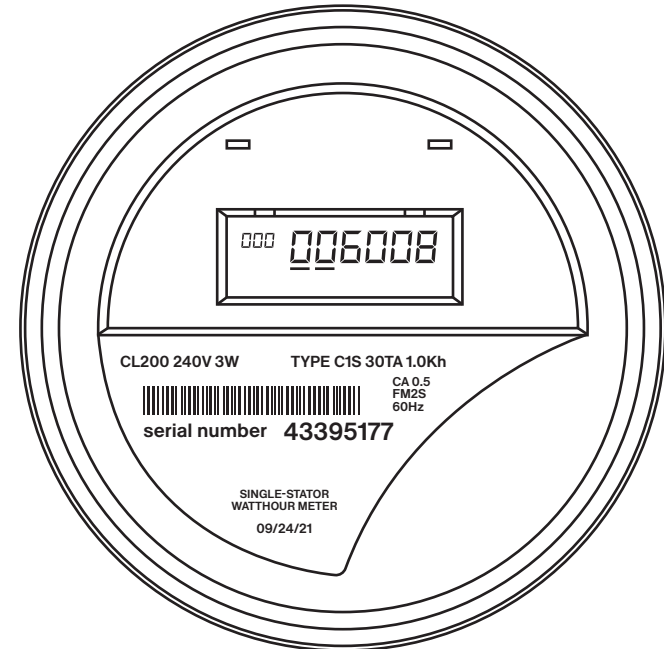
\$10.96  
 \$4.71

**Your overall energy charges include:**  
 • \$0.15 franchise fees

\$0.05

**Additional information:**  
 • Service voltage: 240 volts  
 • Generation Municipal Surcharge (GMS) factor: 0.009144  
 • 2019 Vintage CRS

## Net Power Meter



### Weekdays

35¢	51¢	38¢
25¢	41¢	28¢

Above  
Baseline

After Baseline  
Credit





## LADWP Power Bill



### Electric Charges

**BILLING PERIOD**  
10/10/17 - 12/9/17

**DAYS**  
60

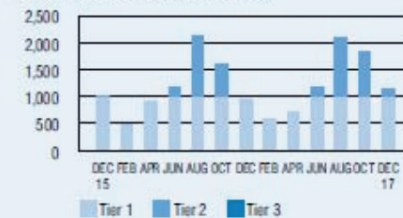
**ZONE**  
2

**RATE SCHEDULE**  
R-1 and R-1[j] Residential Electric - Rate A  
Standard Service

**NEXT SCHEDULED READ DATE**  
2/9/18

**HIGHEST MONTHLY KWH**  
1031.803280 Tier 2

### USAGE HISTORY (Total kWh)



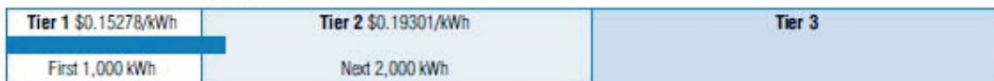
	Prev Yr	Dec 17
Total kWh used	950	1,136
Average daily kWh	15	19
Days in billing period	63	60
Your average daily cost of electricity		\$3.47

METER NUMBER	CURRENT READ	PREVIOUS READ	TOTAL USED
00009-00542583	97656	96520	1136 kWh

Power Access Charge Tier 2		9.80
Tier 1 Energy	1,000 kWh x \$0.15278/kWh	152.78
Tier 2 Energy	136 kWh x \$0.19301/kWh	26.25
<b>Subtotal Energy Charges</b>		<b>\$188.83</b>
City of Los Angeles Utility Tax	\$188.83 x 10%	18.88
State Energy Surcharge	1,136 kWh x \$0.00029/kWh	0.33

**Total Electric Charges \$ 208.04**

### Your Electric Usage by Tier



Usage is billed at different rates, depending on how much you use. This graph shows how your energy usage relates to these tiers, and the rate you paid in each tier. For more, visit [www.ladwp.com/res\\_electric](http://www.ladwp.com/res_electric)

## Net Power Meter

